

See Pages 246
247
248
264

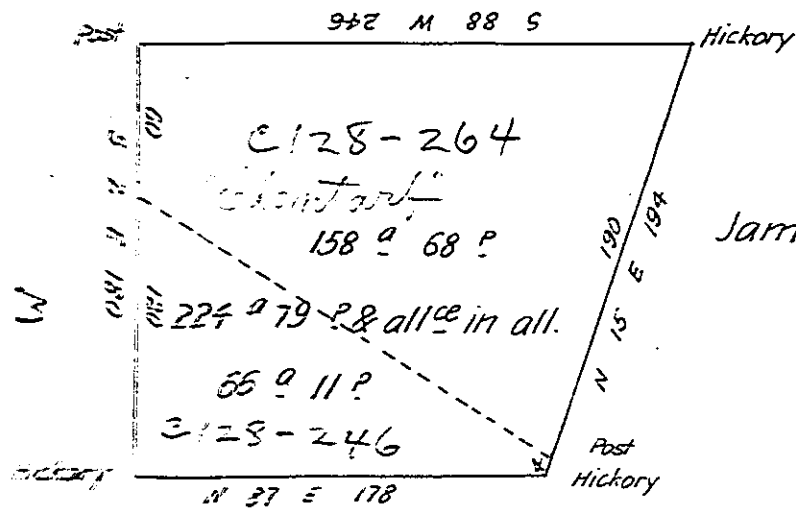
263
P 36-509
2066

James Morrison

U 144 23

Guion Morrison

P 36-253



James Allison

U 192 99

Andrew Swearingen

The above described tract of land containing two hundred and twenty-Acres & Seventy nine Perches with the allowance. Situate on a branch of Charlier's Creek in Washington County was surveyed as follows viz.

- 158⁰⁵ 68²⁷ to James Morrison on his warrant dated 22nd Feb^r 1786
- 66 11 - to do^o Morrison on ditto dated 8th April 1785
- 224 73 - & allowance Surd 3^d Aug^t 1785 & 3^d Aug^t 1786

IN TESTIMONY that the above is a copy of the original remaining on file in the Department of Internal Affairs of Pennsylvania, made conformably to an Act of Assembly approved the 16th day of February, 1833, I have hereunto set my Hand and caused the Seal of said Department to be affixed at Harrisburg, this twenty eighth day of November 1905

Secretary of Internal Affairs.